

B2H: Benefits of a Clean-energy Pipeline

Construction jobs and spending

During construction, the Boardman to Hemingway (B2H) project will bring more jobs to eastern Oregon and its businesses — whether it's a hotel booking more guests, a restaurant selling more meals, a supply store providing materials and equipment for the job, or a local contractor helping build it. Construction is expected to last approximately three years, wrapping up in 2026 or later.

Tax base

After it's built, B2H will add millions of dollars to the yearly tax base of the counties it crosses. The counties can use this money to fund new projects for their communities and keep residents' and businesses' tax bills under control.

Estimated annual tax payments on B2H (source: *2019 IRP Appendix D*)

- **Baker County: \$1.7 million**
- **Malheur County: more than \$900,000**
- **Union County: more than \$600,000**
- **Umatilla County: \$500,000**
- **Morrow County: more than \$250,000**

Additional capacity on existing lines

B2H will enable economic development opportunities in eastern Oregon that could give job-seekers local choices, reducing the number of people who leave the area to find work.

These opportunities will come from capacity on existing transmission lines in Umatilla, Union and Baker counties. B2H will relieve congestion on the existing 230-kilovolt (kV) lines and make room for new factories, data centers or other power-intensive businesses.



New generation

B2H also will present opportunities to energy entrepreneurs, whether they're building solar arrays, wind turbines or other energy sources. The new capacity that B2H adds to the system will give these businesses a way to connect their projects to the grid and sell their energy.

Like other new businesses, electricity-generation projects would add to the local tax bases and create new jobs, benefiting counties and cities across eastern Oregon.

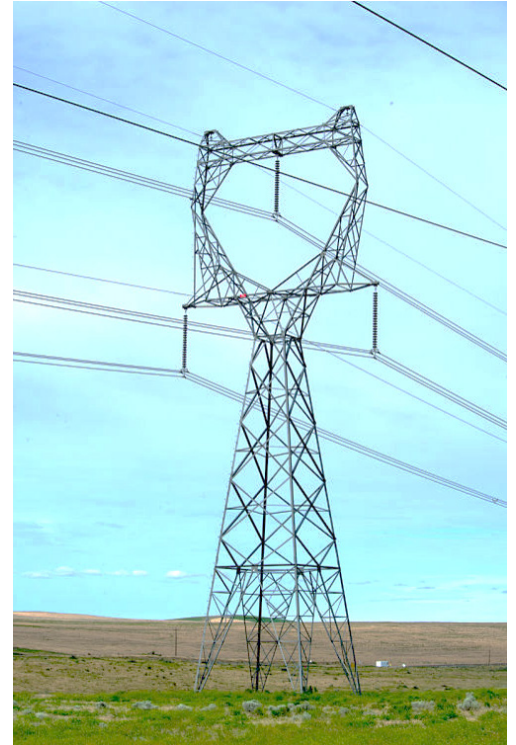
Questions? Comments?

Idaho Power Company
P.O. Box 70
Boise, ID 83707
B2H@idahopower.com
1-877-339-0209

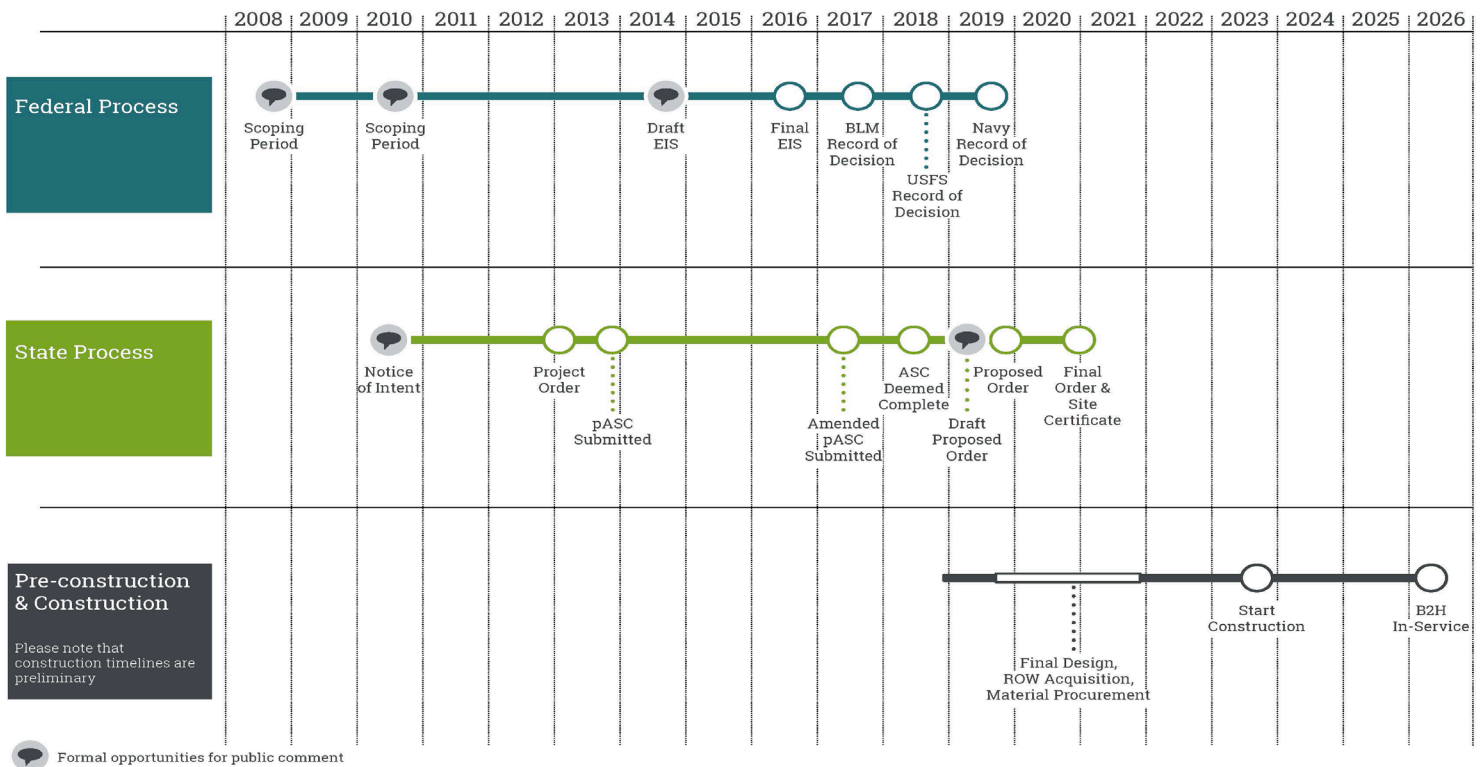
More information is available at:
boardmantohemingway.com or
idahopower.com

Boardman to Hemingway at a Glance

- Proposed 300-mile, 500-kV transmission line between Oregon and Idaho
- Carries low-cost, reliable, clean energy to customers across the Pacific Northwest and Mountain West
- Helps Oregon utilities meet renewable-energy and carbon-reduction goals
- Towers will range from 100 feet to 180 feet tall, typically 140 feet
- Easement widths will range from 100 feet to 250 feet
- Activities like farming, ranching, and recreation can continue under and around the line



Project Schedule



**Questions?
Comments?**

info@boardmantohemingway.com
1-877-339-0209

boardmantohemingway.com
idahopower.com